

## SIDE NOTES

### College of Western Idaho leases Boise building

*By Brad Carlson*

IDAHO BUSINESS REVIEW

The College of Western Idaho is adding a Boise location.

The Nampa-based community college leased a 52,260-square-foot building at 1360 Eagle Flight Way, in the 45-acre Blackeagle complex at Overland and Maple Grove roads. Known as the Pintail Center, it previously housed Micron Technology technical support operations and World Travel, a travel agency for Micron.

CWI President Dennis Griffin said the location will be more convenient for students on the east side of the Treasure Valley.

Business and Office Technology, and Information Technology, courses

will be offered in the Boise location starting in August, he said. Those courses will be moved off the main Boise State University campus.

Also at Blackeagle, CWI students will be able to register for courses, take assessment tests and attend general lower-division academic classes.

"It will be our major intake center for people on that end of the Valley," Griffin said.

"We knew from the very beginning that we needed a major presence in Boise and Ada County," he said. He added: "Our plan would be to expand there later as we grow."

The college signed a 10-year lease with renewal options, said Travis Anderson, chief operating officer for Blackeagle owner The Sundance Co. CWI is a good fit at Blackeagle because the park likely will have space to accommodate future expansion, and because most parking

**"It will be our major intake center for people on that end of the Valley."**

– Dennis Griffin, College of Western Idaho

See CWI, pg 2F

# NCA NEWSFAX

NCA • P.O. Box 6407 • BOISE, ID 83707 • 208-342-5402 • Fax: 208-342-0844

FOR YOUR INFORMATION  
APRIL 13, 2009

**Idaho Business Review, Monday, April 13, 2009 – Page 2 of 2**

## CWI to take over governance of several BSU programs in July

CWI from pg 1F

impacts will be in the evening, he said.

Brown-Mackie College has also been expanding at Blackeagle. Griffin said he does not expect an impact on CWI's operation there.

CWI on July 1 will take over governance of the Sellaand College of Applied Technology from Boise State. Most of the Sellaand courses will remain at Boise State until CWI finds space for them, but CWI must find space for them within three years, he said.

Also in July, CWI is slated to take over the former Boise State University Canyon County Center in west Nampa. CWI will offer nursing and allied health profession programs, he said.

CWI ([www.cwidaho.cc](http://www.cwidaho.cc)) is based in the former Boise State University West campus in northeast Nampa. It started offering classes in January 2008. Voters in Ada and Canyon counties approved the school in May 2007.

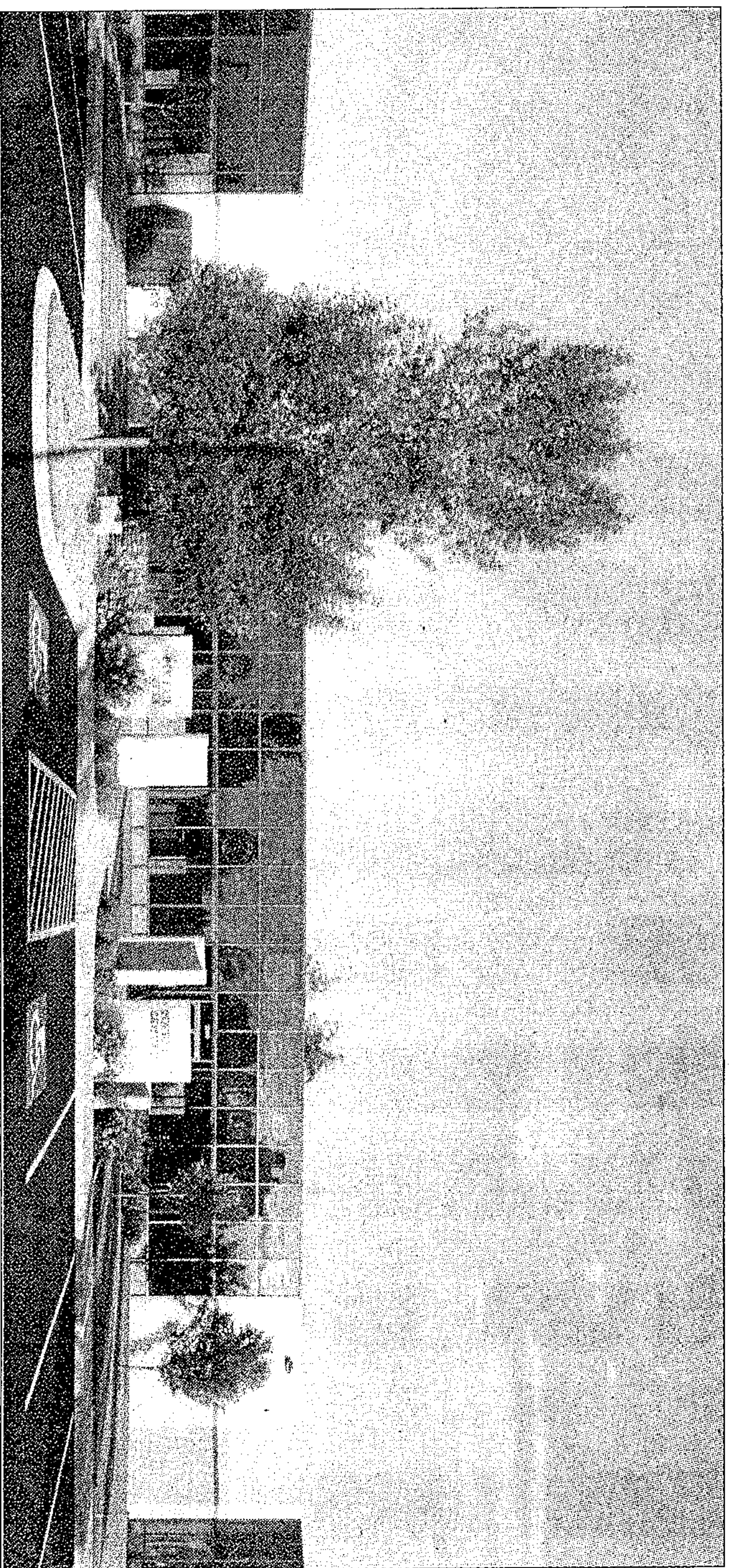


PHOTO COURTESY OF SUNDANCE CO.

The Nampa-based College of Western Idaho is adding a Boise location. The college has leased a 52,260-square-foot building at 1360 Eagle Flight Way. The facility is located in the 45-acre Blackeagle complex at Overland and Maple Grove roads and is known as the Pintail Center.